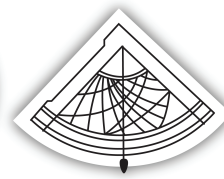




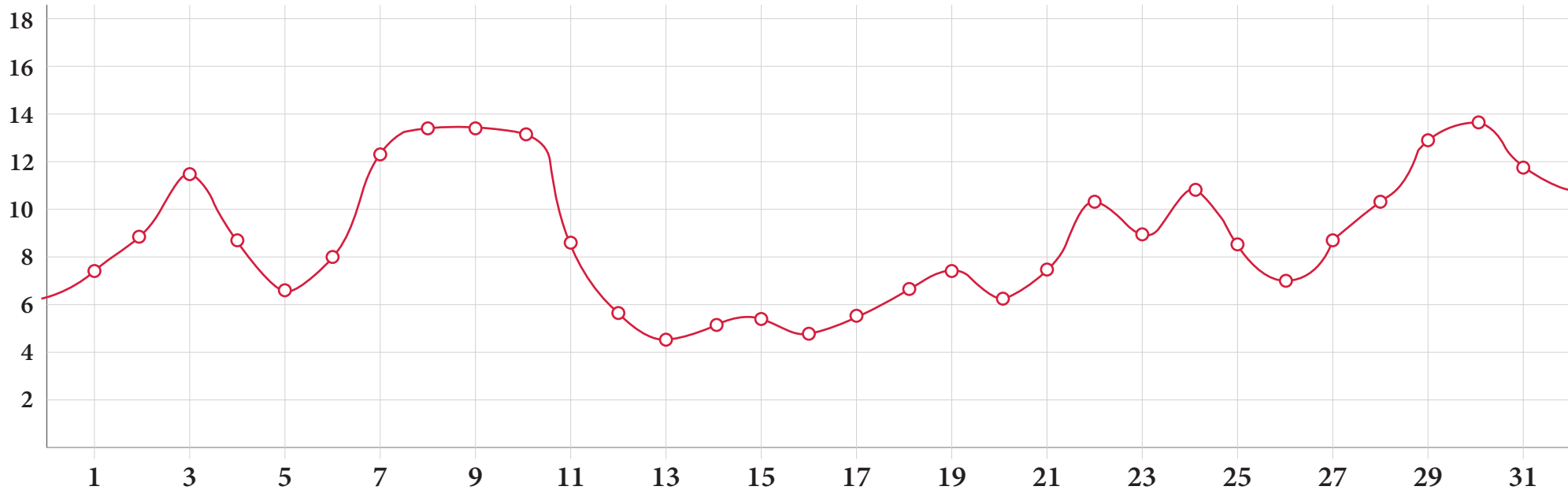
BOĞAZIÇI ÜNİVERSİTESİ
KANDİLLİ RASATHANESİ ve DEPREM ARAŞTIRMA ENSTİTÜSÜ
METEOROLOJİ LABORATUVARI

Meteoroloji Bülteni
2025 Yılı Ocak



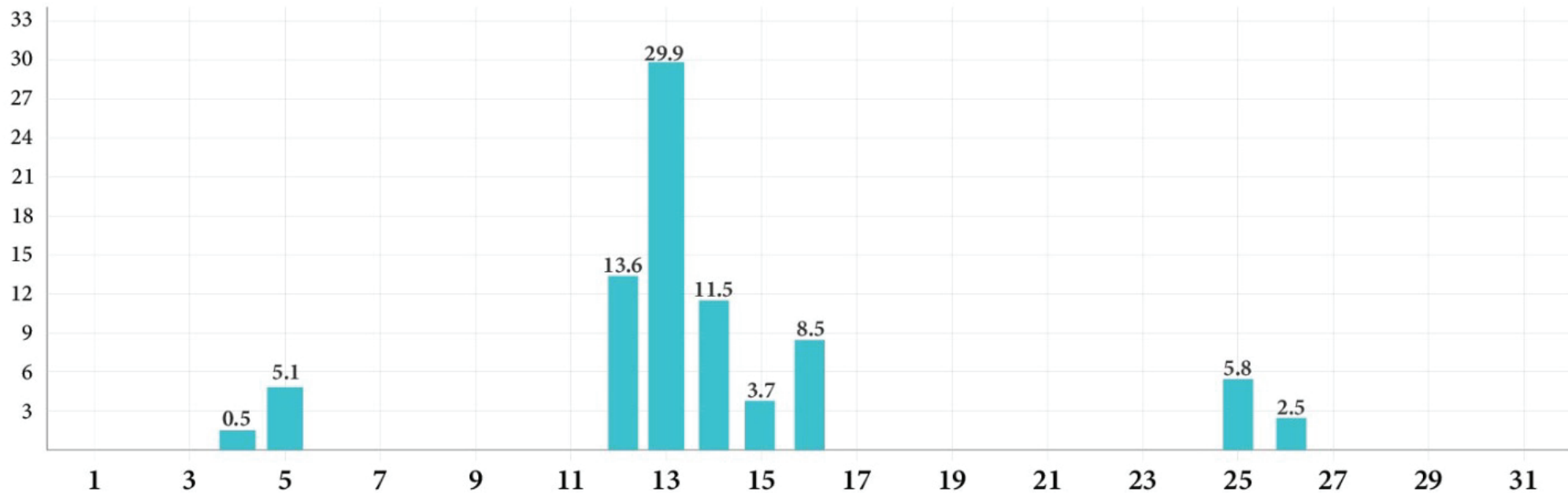
| GÜN DAY | BASINÇ (pressure) (700+m) (Aktüel) | | | | SICAKLIK (temperature) (C) | | | | BAĞIL NEM (relative humidity) (%) | | | | RÜZGAR (wind) (m/s) | | | BULUT (cloud) 0-10 | YAĞIŞ precipit. (mm) | KAR snow (cm) |
|------------|---|--------------|--------------|--------------|----------------------------------|--------------|--------------|--------------|---|--------------|--------------|--------------|---------------------------|--------------|-------------|--------------------------|----------------------------|---------------------|
| | ort. mean | min. min. | mak. max. | fark dif. | ort. mean | min. min. | mak. max. | fark dif. | ort. mean | min. min. | mak. max. | fark dif. | ort. mean | mak. max. | yon dir. | ort. mean | top. sum | top. sum |
| 1 | 1027.8 | 1025.9 | 1029.2 | 3.4 | 7.9 | 5.5 | 11.2 | 5.7 | 83 | 63 | 93 | 29 | 1.4 | 8.5 | SE | 0 | - | - |
| 2 | 1023.1 | 1020.0 | 1026.1 | 6.1 | 8.8 | 6.9 | 10.8 | 4.0 | 83 | 61 | 96 | 35 | 10.2 | 17.9 | NNW | 2 | - | - |
| 3 | 1016.2 | 1013.1 | 1019.9 | 6.8 | 11.6 | 9.8 | 13.8 | 7.5 | 74 | 62 | 85 | 23 | 15.4 | 26.5 | SSE | 8 | - | - |
| 4 | 1015.7 | 1011.9 | 1020.7 | 8.8 | 8.6 | 5.0 | 12.6 | 7.5 | 90 | 75 | 99 | 24 | 14.6 | 26.7 | SSW | 9 | 0.5 | - |
| 5 | 1018.8 | 1017.6 | 1020.6 | 3.0 | 6.7 | 5.5 | 9.3 | 3.8 | 80 | 70 | 89 | 19 | 3.8 | 12.4 | SSW | 10 | 5.1 | - |
| 6 | 1018.0 | 1016.9 | 1019.0 | 2.1 | 8.0 | 5.5 | 10.0 | 4.6 | 87 | 77 | 96 | 19 | 6.9 | 14 | SSE | 5 | - | - |
| 7 | 1017.7 | 1016.8 | 1019.1 | 2.2 | 12.2 | 9.7 | 15.6 | 5.9 | 74 | 55 | 86 | 30 | 13.1 | 25.4 | SSE | 1 | - | - |
| 8 | 1017.7 | 1016.8 | 1018.7 | 1.9 | 13.6 | 12.0 | 16.0 | 4.1 | 76 | 65 | 88 | 23 | 11.3 | 20.1 | SW | 8 | - | - |
| 9 | 1017.2 | 1014.5 | 1019.0 | 4.5 | 13.6 | 11.7 | 15.7 | 4.0 | 74 | 61 | 87 | 26 | 6.6 | 14 | NE | 3 | - | - |
| 10 | 1011.9 | 1010.1 | 1014.4 | 4.2 | 13.3 | 11.3 | 15.9 | 4.5 | 68 | 56 | 79 | 23 | 5.4 | 14.5 | ENE | 6 | - | - |
| 11 | 1012.3 | 1010.2 | 1014.4 | 4.1 | 8.5 | 5.9 | 13.1 | 7.3 | 92 | 74 | 100 | 26 | 13.2 | 20.6 | ESE | 10 | - | - |
| 12 | 1014.7 | 1013.3 | 1018.4 | 5.1 | 5.8 | 4.1 | 7.3 | 3.2 | 100 | 99 | 100 | 1 | 16.2 | 30.6 | SSE | 10 | 13.6 | - |
| 13 | 1021.9 | 1018.3 | 1024.6 | 6.3 | 4.4 | 3.8 | 5.0 | 1.2 | 98 | 92 | 100 | 8 | 15.8 | 26.3 | ESE | 10 | 29.9 | - |
| 14 | 1024.9 | 1022.6 | 1027.1 | 4.5 | 5.1 | 4.1 | 6.3 | 2.2 | 93 | 84 | 97 | 13 | 8.4 | 18.5 | SSE | 10 | 11.5 | - |
| 15 | 1018.4 | 1016.1 | 1022.6 | 6.5 | 5.3 | 3.9 | 6.4 | 2.5 | 96 | 82 | 100 | 18 | 13.3 | 23.8 | SSE | 10 | 3.7 | - |
| 16 | 1028.0 | 1021.8 | 1033.3 | 11.5 | 4.9 | 4.0 | 5.8 | 1.8 | 91 | 80 | 99 | 18 | 11.3 | 19.9 | SSE | 10 | 8.5 | - |
| 17 | 1032.4 | 1029.7 | 1034.2 | 4.4 | 5.5 | 4.0 | 7.9 | 3.9 | 80 | 64 | 90 | 26 | 5.8 | 12.3 | ESE | 7 | - | - |
| 18 | 1026.9 | 1024.6 | 1029.8 | 5.3 | 6.6 | 4.7 | 9.9 | 5.1 | 81 | 64 | 89 | 25 | 3.7 | 10.2 | SSE | 10 | - | - |
| 19 | 1023.0 | 1021.3 | 1025.1 | 3.7 | 7.5 | 5.5 | 11.0 | 5.5 | 85 | 61 | 97 | 35 | 5.2 | 9.4 | SSW | 0 | - | - |
| 20 | 1022.6 | 1020.9 | 1024.1 | 3.2 | 6.1 | 4.2 | 8.7 | 4.5 | 81 | 64 | 95 | 31 | 6.0 | 14.8 | SSW | 1 | - | - |
| 21 | 1017.8 | 1016.0 | 1020.8 | 4.8 | 7.5 | 4.2 | 11.5 | 7.3 | 80 | 59 | 91 | 32 | 3.9 | 13.2 | NNE | 9 | - | - |
| 22 | 1015.2 | 1014.2 | 1016.2 | 2.0 | 10.2 | 8.4 | 13.0 | 4.6 | 83 | 62 | 94 | 32 | 5.7 | 12.3 | NE | 9 | - | - |
| 23 | 1016.4 | 1015.7 | 1017.9 | 2.1 | 9.0 | 7.2 | 11.6 | 4.4 | 94 | 79 | 100 | 21 | 5.2 | 9.6 | ENE | 6 | - | - |
| 24 | 1015.7 | 1014.6 | 1016.8 | 2.2 | 10.8 | 8.1 | 13.3 | 5.2 | 82 | 70 | 96 | 26 | 8.7 | 12.5 | SW | 6 | - | - |
| 25 | 1017.1 | 1013.4 | 1021.6 | 8.2 | 8.4 | 5.3 | 11.3 | 5.9 | 88 | 82 | 98 | 16 | 9.9 | 27.7 | SSW | 10 | 5.8 | - |
| 26 | 1021.3 | 1020.2 | 1022.4 | 2.0 | 7.0 | 4.2 | 10.0 | 5.8 | 91 | 81 | 97 | 16 | 6.6 | 13.8 | WNW | 0 | 2.5 | - |
| 27 | 1019.1 | 1017.5 | 1020.5 | 3.0 | 8.7 | 7.2 | 11.8 | 4.6 | 90 | 74 | 100 | 26 | 7.4 | 11.9 | SW | 8 | - | - |
| 28 | 1016.4 | 1015.3 | 1018.1 | 2.7 | 10.2 | 7.6 | 13.0 | 5.4 | 82 | 67 | 94 | 27 | 9.0 | 17.4 | WN | 4 | - | - |
| 29 | 1017.6 | 1015.7 | 1020.1 | 4.4 | 12.9 | 9.7 | 16.0 | 6.3 | 75 | 62 | 94 | 32 | 12.9 | 29.1 | SE | 3 | - | - |
| 30 | 1020.0 | 1019.2 | 1021.1 | 1.9 | 13.8 | 11.6 | 15.5 | 3.8 | 62 | 54 | 77 | 23 | 2.6 | 14.4 | NNE | 9 | - | - |
| 31 | 1020.4 | 1018.8 | 1022.0 | 3.1 | 11.9 | 9.9 | 14.1 | 4.2 | 77 | 60 | 91 | 32 | 3.3 | 10.2 | NNE | 6 | - | - |

Meteoroloji Laboratuvarı 2025 Ocak Ayı Bülteni
2025 Ocak Ayı Ortalama Sıcaklık Grafiği

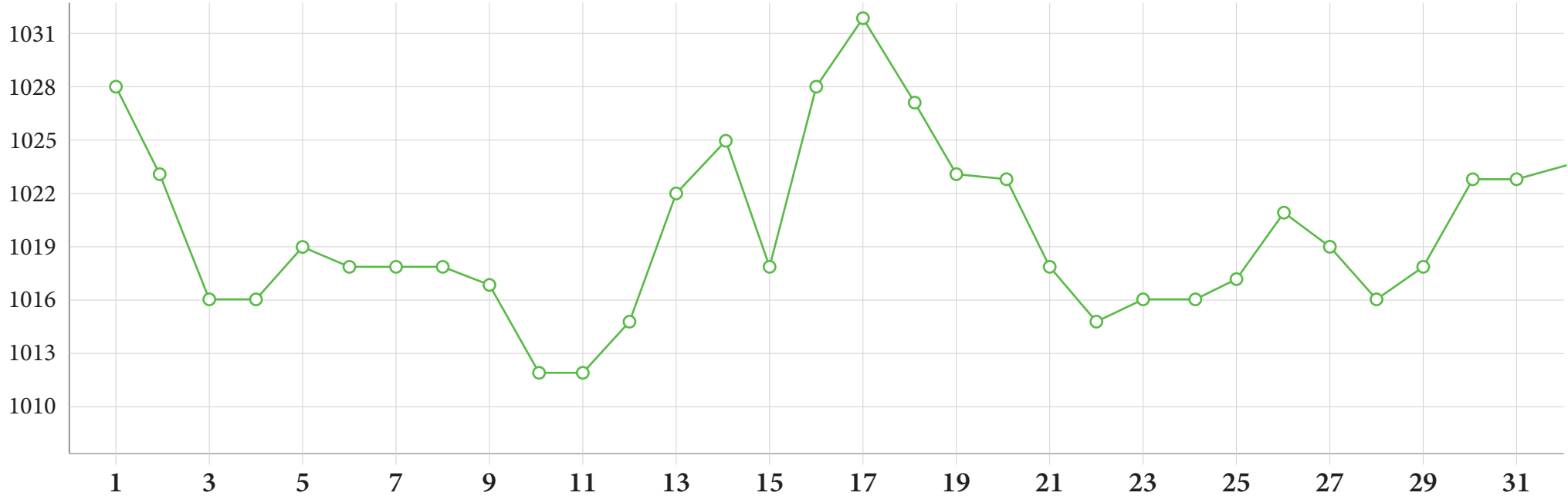


Meteoroloji Laboratuvarı 2025 Ocak Ayı Bülteni
2025 Ocak Ayı Ortalama Yağış Grafiği

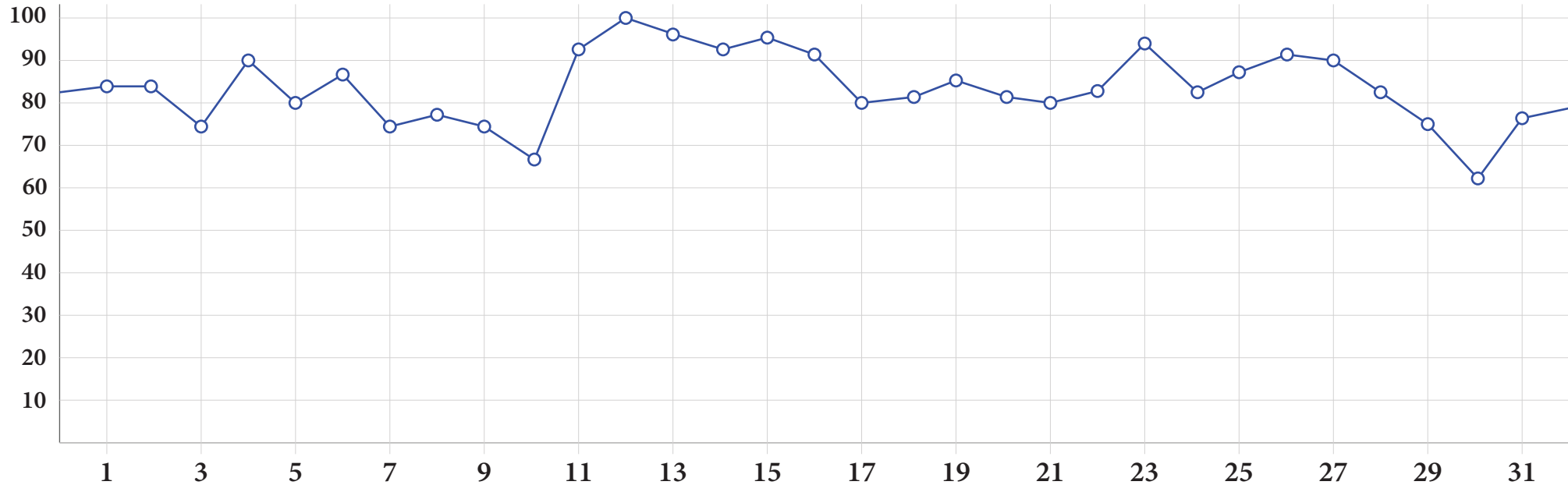
* Tablodaki veriler **mm** olarak verilmiştir



Meteoroloji Laboratuvarı 2025 Ocak Ayı Bülteni
2025 Ocak Ayı Ortalama Basınç Grafiği



Meteoroloji Laboratuvarı 2025 Ocak Ayı Bülteni
2025 Ocak Ayı Ortalama Nem Grafiđi



2025 Ocak Ayı Ortalama Hakim Rüzgar Grafiği

